

Sea Recovery Aqua Whisper Pro

Mid to Large Yachts
(40 - 80 ft / 12 - 24 m)



For the Hands-On Boater

The Aqua Whisper Pro watermaker is suited for charter, offshore fishing, and ocean cruising. Its traditional manual functions and touch-pad control panel allows simple operation and digital + analog instrumentation for redundancy. The Aqua Whisper Pro's high pressure pump is engineered to be quieter than conventional high pressure pumps, and operates for 2,500 hours before any maintenance is required.



Aqua Whisper Pro - compact

Contact Information:

Parker Hannifin Corporation
Water Purification
2630 E. El Presidio Street
Carson, CA 90810

phone 310 608 5600
fax 310 608 5692
waterpurification@parker.com

Website:
www.parker.com/waterpurification

Sales:
waterpurification@parker.com

Tech Support:
watertech@parker.com

Features & Benefits:

- Automatic FWF on frame
- Small footprint
- Automatic shutdown option
- Robust, fail-safe design



Aqua Whisper Pro - modular



ENGINEERING YOUR SUCCESS.

Specifications

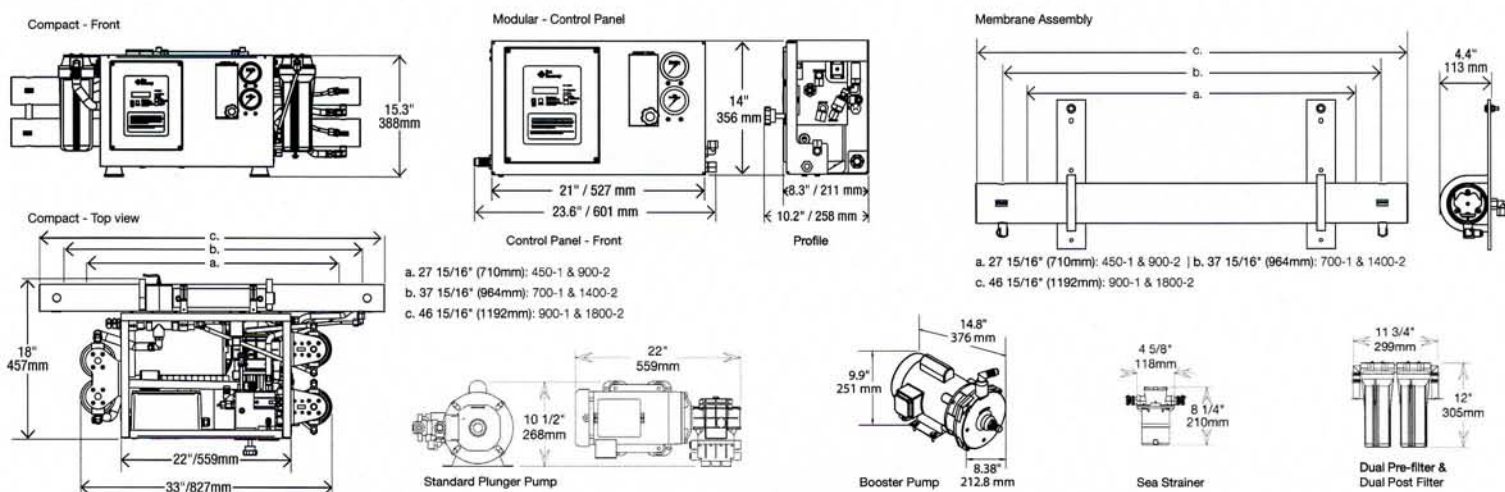
	Model #	Production / Hr.	Production / 24 hrs.	AW PRO compact*	AW PRO modular*
PRODUCTION & WEIGHT	450-1	19 Gal / 71 L	450 Gal / 1,703 L	157 lbs / 71 kg	157 lbs / 71 kg
	700-1	29 Gal / 110 L	700 Gal / 2,650 L	160 lbs / 73 kg	160 lbs / 73 kg
	900-1	38 Gal / 142 L	900 Gal / 3,407 L	162 lbs / 73 kg	162 lbs / 73 kg
	900-2	38 Gal / 142 L	900 Gal / 3,407 L	169 lbs / 77 kg	169 lbs / 77 kg
	1400-2	58 Gal / 221 L	1,400 Gal / 5,300 L	175 lbs / 79 kg	175 lbs / 79 kg
	1800-2	58 Gal / 221 L	1,800 Gal / 6,814 L	180 lbs / 82 kg	180 lbs / 82 kg

*Weights based on single phase motor. For three phase motors subtract 9 lbs.

ELECTRICAL	Phase	Pump Motor	Voltage VAC	Hz	Normal Operating Amps	Start Up Current
Plunger Pump	Single	High Pressure / Booster	110-115 / 220 -230	50 / 60	110 / 220 30 / 15	110 / 220 100 / 50
	Three	High Pressure / Booster	220-230 / 380-460	50 / 60	220 / 380 - 440 11 / 5.5	220 / 380 - 460 30 / 15

Circuit Breaker Size	Operating AC Voltage	Phase	Recommended Circuit Breaker
Plunger Pump	110-115 / 220-230	Single	40 Ampere / 20 Ampere
	220 / 380 / 460	Three	15 Ampere / 10 Ampere / 10 Ampere

Dimensions



WARNING: This product can expose you to chemicals including Di(2-ethylhexyl) phthalate (DEHP), which is known to the state of California to cause cancer and birth defects or other reproductive harm. For more information go to www.P65Warnings.ca.gov.

